



Waldhornstrasse 12  
D-88662 Überlingen  
Fon: +49 (0) 7551.1234  
Fon: +49 (0) 7551.4444  
Fax: +49 (0) 7551.918888  
www.winkler-technik.com

# Winkler Technik



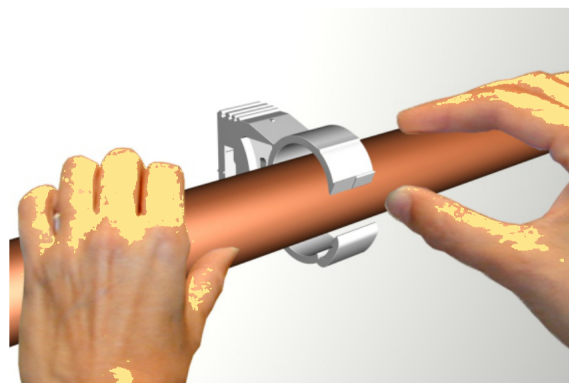
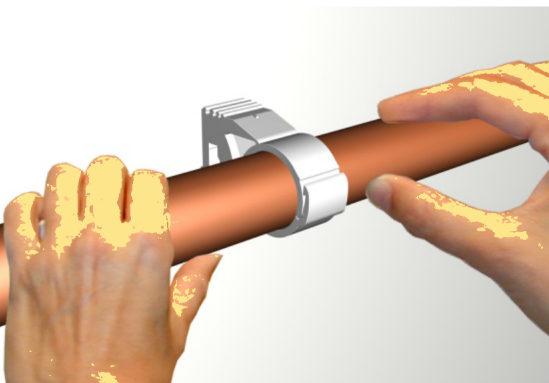
## SW-Clamp

for an easy and quick fastening of all established pipes of 14 - 35 mm diameter (1/2" - 1 1/4") on a wall or a ceiling

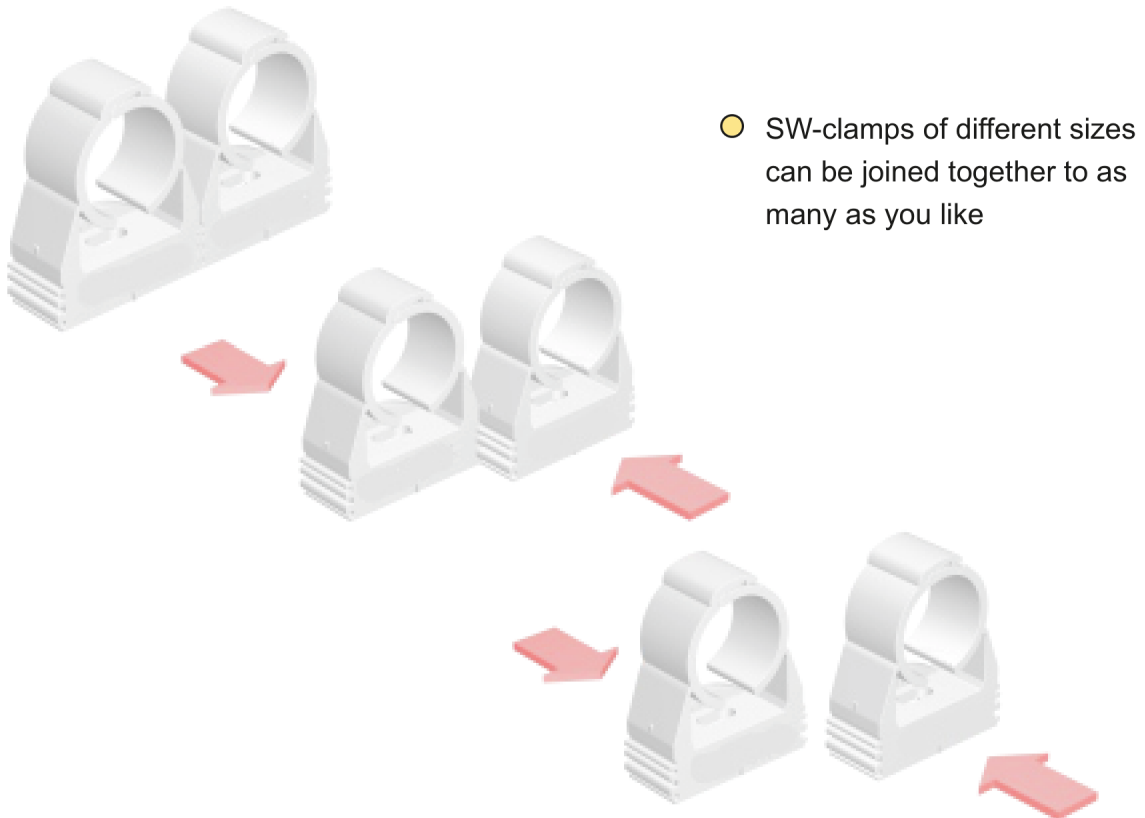
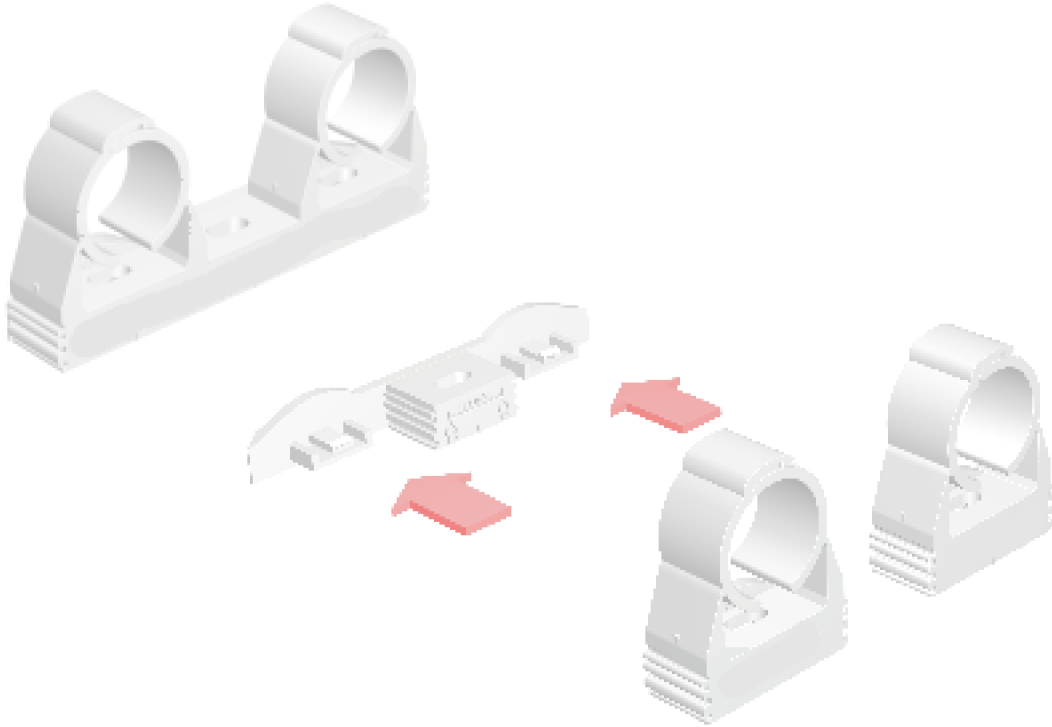


- temperature resistance: - 30 ° to + 85 ° C
- surface UV-proof
- connector system combinable with all sizes (exception: SW32W)

Subject to technical changes KG 11\_25/03



- bracket  
for mounting 2 SW-clamps  
up to max. SW 20



- SW-clamps of different sizes  
can be joined together to as  
many as you like



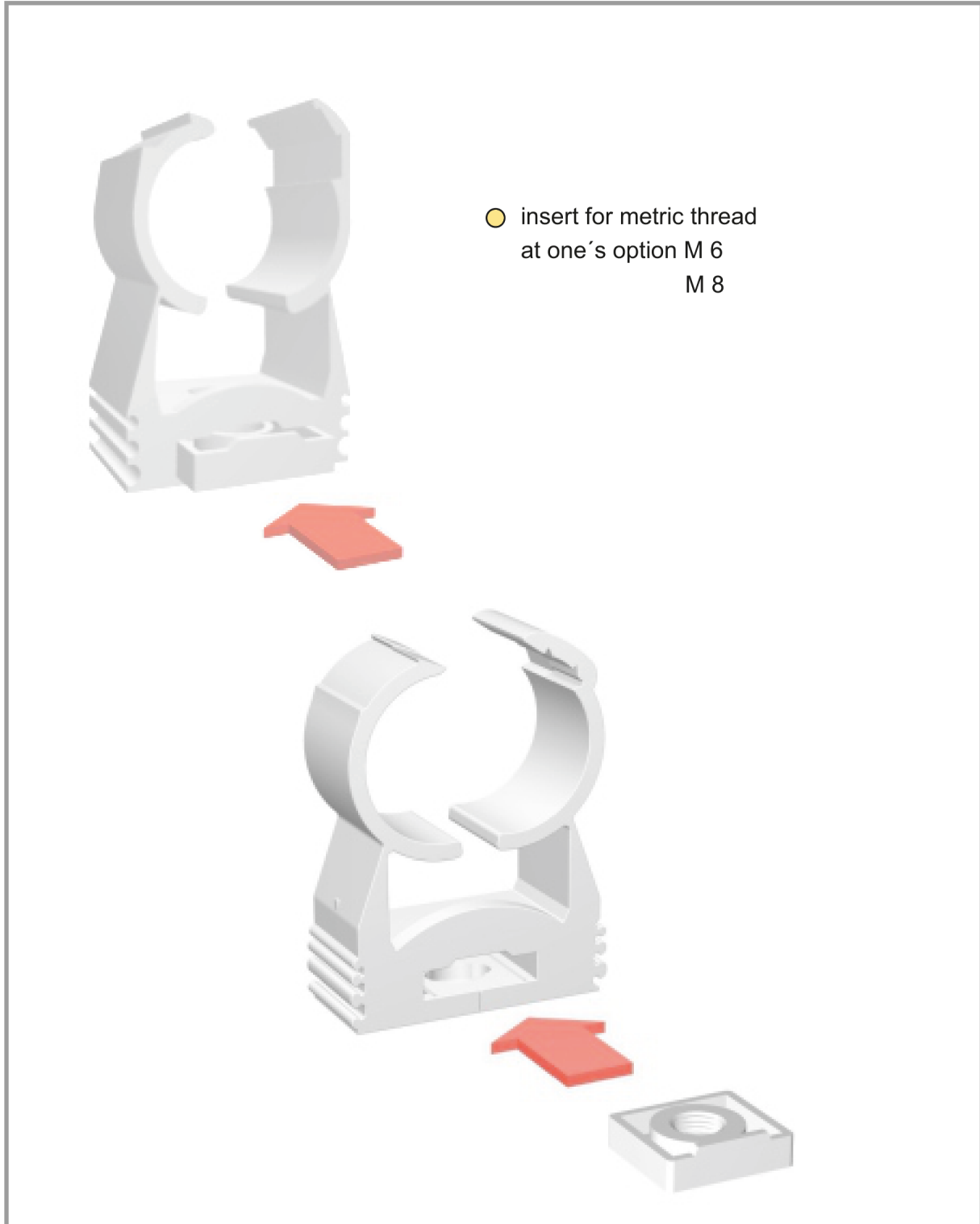
ORIGINAL  
U-SCHIENE  
U-RAIL

Waldhornstrasse 12  
D-88662 Überlingen

Fon: +49 (0) 7551.1234  
Fon: +49 (0) 7551.4444

Fax: +49 (0) 7551.918888  
www.winkler-technik.com

# Winkler Technik



Subject to technical changes KG 11.25/03

Winkler Technik GmbH  
Sitz: Überlingen

Geschäftsführer/-in:  
Alexander Winkler  
Veronika Winkler

Handelsregister Freiburg  
HRB 580 264

Ust.IdNr.:  
DE146963071

## SW-Clamp

## Technical Data

item No.	for tubing OD	colour	material	packing unit	weight approx.
<b>SW15W</b>	14.0 - 16.5 mm (1/2")	white (other colours on request)	polyamide	100 / box	0.6 kg (1.3 lbs.)
<b>SW17W</b>	16.5 - 19.5 mm (5/8")			100 / box	0.8 kg (1.8 lbs.)
<b>SW20W</b>	19.5 - 24.0 mm (3/4")			50 / box	0.4 kg (0.9 lb.)
<b>SW25W</b>	24.2 - 28.0 mm (1")			50 / box	0.5 kg (1.1 lbs.)
<b>SW32W</b>	31.2 - 35.8 mm (1 1/4")			50 / box	0.8 kg (1.8 lbs.)

### Accessories :

#### Bracket for mounting:

CH-Duo 2050 for mounting 2 SW-clamps up to  
max. SW 20, 100 / box, 1,200 / carton - 8.6 kg (18.9 lbs.)

#### Thread insert (at one's option)

##### M6 (CHM6)

100 / box, 1,000 / carton

0.9 kg (2,0 lbs.)

##### M8 (CHM8)

100 / box, 1,000 / carton

0.8 kg (1.8 lbs.)

#### Metal-adapter for thread

##### M 10 (CHM10AD)

50 / box, 500 / carton

5.5 kg (12.1 lbs.)